

A cut above. HP EliteBook

VERSATILE. ULTRA-THIN. STYLISH. THE NEW ELITEBOOK TABLET PC.



HP DURACASE



BUSINESS IS
PERSONAL.

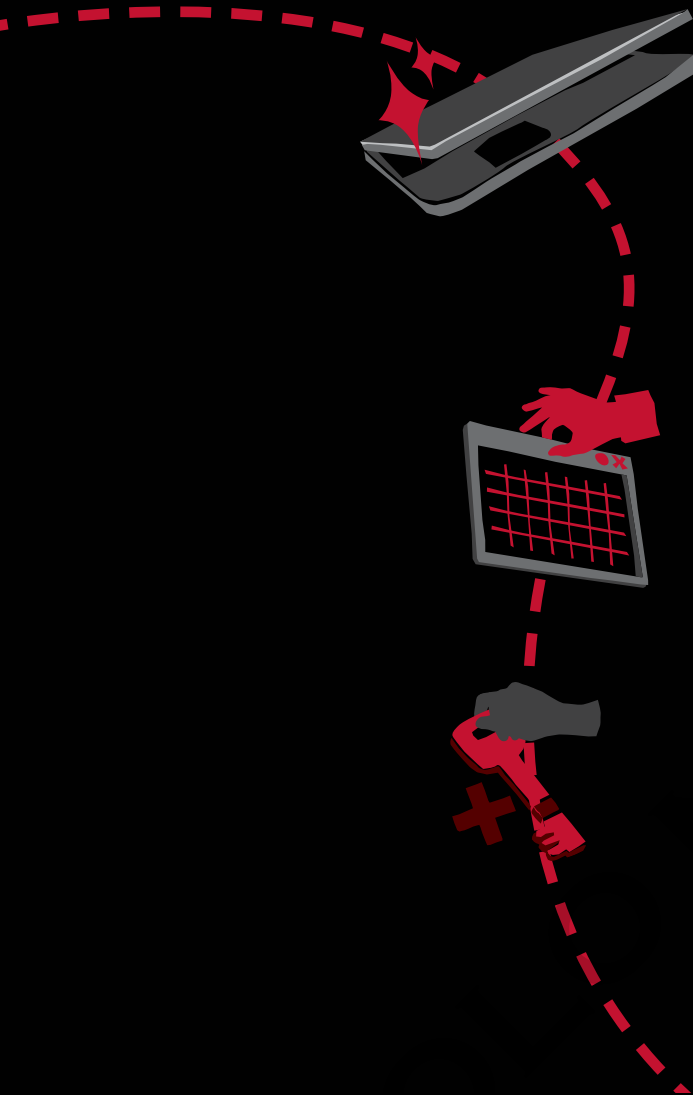
HP EliteBook 2730p
Notebook PC



Enjoy

HP PROFESSIONAL INNOVATIONS

with the HP EliteBook 2730p Notebook PC



Outstanding reliability with HP DuraCase

Inspired by aircraft construction, **HP DuraCase** utilises a honey-comb patterned magnesium shell within the display case that is thermally bonded to aluminium for supreme durability in a lightweight package.

And for maximum durability and protection for your notebook from wear and tear, this EliteBook is enhanced with **HP DuraFinish** on its surfaces. And with **HP 3D DriveGuard**, you reduce the risk of corruption or loss of data and protect your notebook from system failures caused by operational shock.

So easy to use with HP QuickLook 2

HP QuickLook 2 allows you to quickly access email, calendar, contacts and task information with the touch-of-a-button. Getting your information takes as little as 10 seconds from sleep mode.

Also includes integrated webcam and **Business Card Reader software** for easy scanning of business cards into your contacts database.

Enhanced security with HP SpareKey

In the event that you have forgotten your password, **HP SpareKey** will identify you by asking 3 personal questions. That makes secure access simple yet convenient.

Other security features include, **HP File Sanitizer** that permanently destroys selected files and folders, so that it cannot be easily recovered and New Drive Encryption for **HP ProtectTools** that encodes all your information on the hard drive volume making it unreadable to an unauthorised person.



The HP EliteBook 2730p Notebook PC is both a versatile business notebook and an innovative writing tablet – all in one ultra-slim design. With just a twist of the screen, it's converted into a tablet and ready for action pen-based navigation, writing and drawing. Have handwritten notes converted to text files or send a hand drawn diagram to co-workers and clients. And with the new jog dial, it's easy to scroll through documents and web pages with a single thumb action. Simply a great business partner that's great for meetings or presentations.

Sleek new design

Stainless steel surface, touch-sensitive controls, complete with a dual-pointing (touchpad and point stick) with scroll zone – all this in a compact tablet notebook that's just 28.2mm thin.



It's tough

The Elitebook was designed to meet MIL-STD 810F requirements¹⁷. These include a series of tough, military reliability tests that measure resistance to shock, moisture, dust, vibration and exposure to temperatures of up to 60°/140° and below -29°C/-20°F.

Bright. Efficient. Tough.

A widescreen marvel

Integrating HP Illumi-Lite LED technology, the 12.1-inch widescreen display is thinner, lighter, and more energy-efficient than standard CCFL displays. The chemically-strengthened glass top cover provides improved durability and excellent traction for smooth, natural writing.

Intel® Core™ 2 Duo Low Voltage technology

Two excellent Intel processors to choose from – the Intel® Core™ 2 Duo Ultra Low Voltage (ULV) processor for longer battery life, or the Intel® Core™ 2 Duo Low Voltage (LV) processor for enhanced system performance.

Excellent viewing experience

The ultra-wide viewing angle delivers excellent image quality and visibility, making it easier for you to view and share on-screen materials. The optional outdoor view display delivers less reflection and higher contrast so there is a significantly better display appearance when working in bright light outdoor and indoor conditions.

Enhanced mobility with extended battery options

Stay mobile and productive for up to 15 hours with the optional HP 2700 Ultra-Slim Battery. The unique battery design also allows you to dock to your HP 2700 Ultra-Slim Expansion Base, for convenient charging while you work.

Optional HP 2700 Ultra-Slim Expansion Base

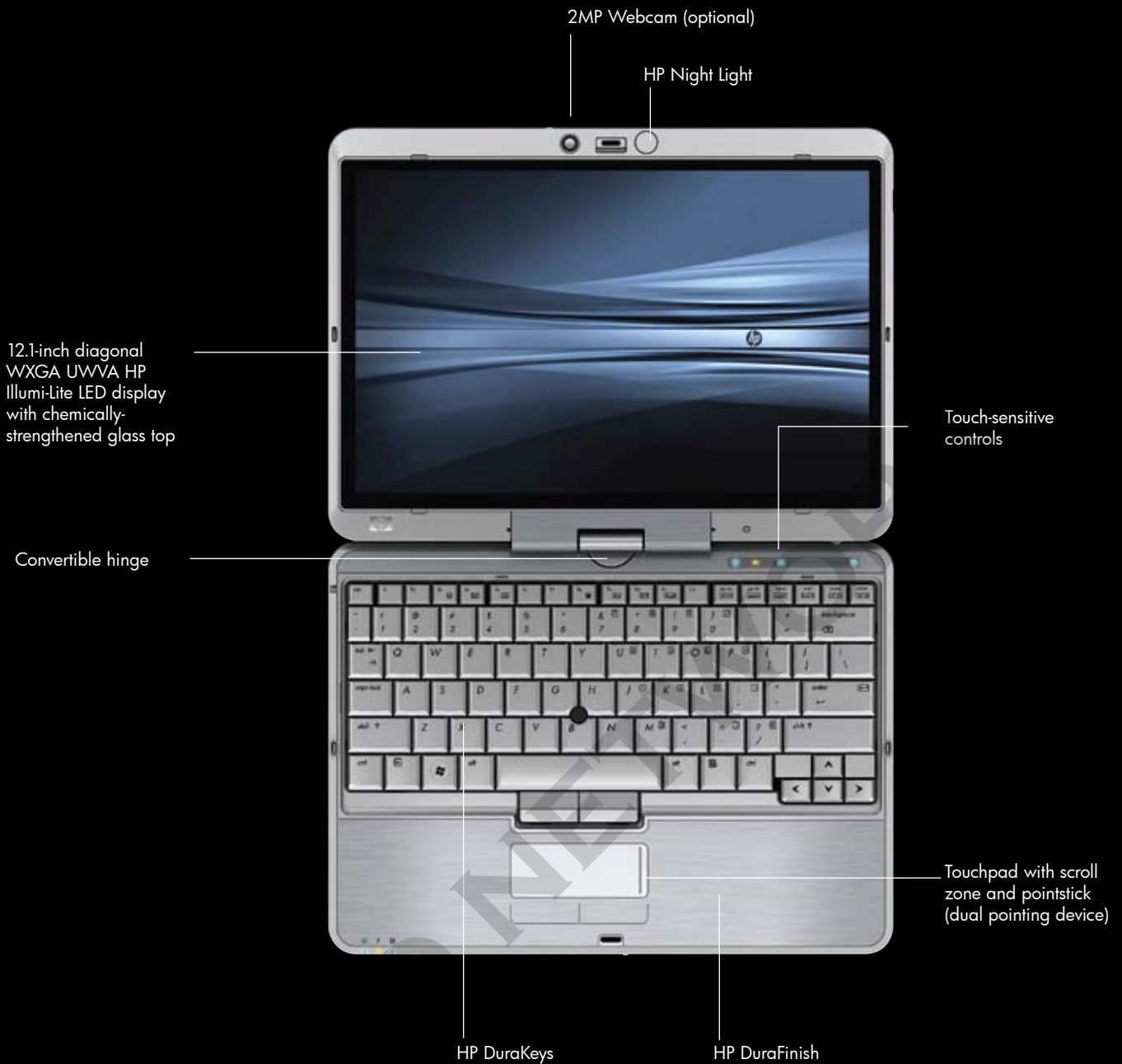
This innovative expansion base also includes a DVD+/-RW drive and fits neatly into your carrying case so you can take your optical drive with you on the road.



Primary battery life with ULV processors*
6-cell (44 WHr) Lithium-Ion battery up to 6h 20m
+ HP 2700 (46 WHr) Ultra-Slim battery up to 15h 00m

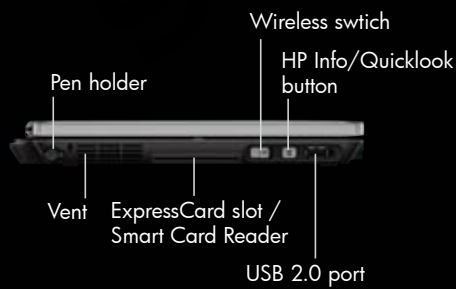
* Battery life will vary depending on the product configuration, product model, applications loaded on the product, power management settings of the product, and the product features used by the customer. As with all batteries, the maximum capacity of this battery will decrease with time and usage.

KEY FEATURES



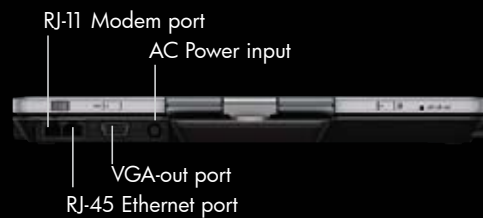
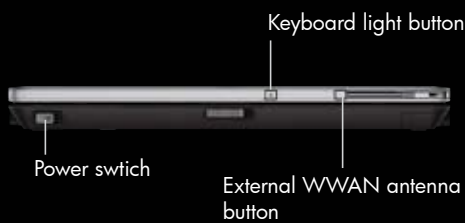
Left view

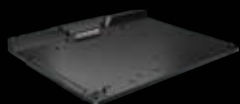
Right view



Front view

Back view



Notebook docking solutions – Turn your notebook into a desktop**HP 2700 Ultra-Slim Expansion Base**

Part No: GD229AA

- No need to plug and unplug your peripherals every time. Dock your HP 2730p Notebook PC while in the office or on the go with the HP 2700 Ultra-Slim Expansion Base which features an integrated DVD+/-RW drive. This expansion base also fits neatly into your notebook carrying case

Memory – Extract maximum performance from your notebook**HP Memory DDR2 800 MHz**

Part No: KT292AA/KT293AA/KT294AA

- Certified HP Memory maximises system performance and creates faster startup times with less delay during routine operations.

Storage solutions – Expand your business storage capability**HP 250GB Pocket Media Drive**

Part No: FE477AA

- HP 250GB Pocket Media Drive provides convenient access to additional storage through your notebook USB port.

Adapter solutions – Power and charge your battery simultaneously.**HP 65W Smart AC Adapter**

Part No: ED494AA

- HP Smart AC power adapters power your notebook and charge the internal battery simultaneously. These adapters provide you with the ability to power your notebook when away from the office or on the road.

**HP 90W Smart Auto AC Adapter**

Part No: ED493AA

Power solutions – The stamina to stay in the field longer**HP 2700 6-cell Battery**

Part No: AH547AA

- Power your notebook on the go with the 6-cell (44 WHr) primary battery and 6-cell (46 WHr) Ultra-Slim battery. Designed to integrate seamlessly with your Ultra-Slim expansion base that fits neatly into your notebook carrying case.

**HP 2700 6-cell Ultra-Slim Battery**

Part No: RX932AA

**HP 1-Bay Battery Charging Station**

Part No: RW635AA

- HP 1-Bay Battery Charging Station and Battery Adapter Kit allow you to charge your batteries separately from the notebook and are also able to detect when the battery should be calibrated for optimal battery life.

**HP Battery Adapter Kit**

Part No: RW641AA

Security options – Keeping your data and notebook safe.**HP/Kensington Security Cable Lock**

Part No: PC766A

- Made from high grade steel and Kevlar brand fibre, you can have peace of mind that your notebook and docking station are safely secured.

Input device – Efficient and precise business input.**HP USB Optical Travel Mouse**

Part No: RH304AA

- Compact, light and convenient, the ideal USB travel mouse for your notebook.

HP UNIVERSAL ACCESSORIES

HP offers you a comprehensive range of accessories to enhance and enrich your computing experience.

HP EliteBook 2730p

Notebook PC

HP recommends Windows Vista® Business.

Specifications

Operating system	Preinstalled: Genuine Windows Vista® Business 32 Genuine Windows Vista downgrade to Genuine Windows® XP Tablet Edition ¹³ Free DOS	OS supported: Genuine Windows Vista® Enterprise ¹ Certified: SuSe Linux Enterprise Desktop 10
Processor²	Intel® Core™ 2 Duo Low Voltage Processor (up to 1.86 GHz, 6 MB L2 cache, 1066 MHz FSB) Intel® Core™ 2 Duo Ultra Low Voltage Processor (up to 1.2 GHz, 3 MB L2 cache, 800 MHz FSB)	
Chipset	Mobile Intel® GS45 Express Chipset with ICH9M-Enhanced (supports Intel® Centrino® 2 with vPro™ technology) ¹¹	
Memory	DDR2 SDRAM, 800MHz, two slots supporting dual channel memory ¹⁵ , 1024/2048/4096 MB SODIMMs, up to 8192MB total	
Internal Storage⁷	80/120 GB 1.8-inch 5400rpm SATA HDD with HP 3D DriveGuard; 80 GB Solid State Drive	
Upgrade Bay³	Not integrated, optional fixed 7-mm DVD+/-RW SuperMulti DL Drive available for HP 2700 Ultra-Slim Expansion Base	
Display	12.1-inch diagonal WXGA (1280 x 800) UWVVA HP Illumi-Lite LED panel with digitizer, 12.1-inch diagonal WXGA (1280 x 800) UWVVA HP Illumi-Lite LED panel with digitizer and outdoor view, optional 2 MP Webcam	
Graphics^{8, 14}	Mobile Intel Graphics Media Accelerator 4500MHD, up to 384 MB of shared system memory, Microsoft® DirectX 10 (Shader 4.0) and OpenGL 2.0 capable	
Audio	High definition audio, integrated speakers, stereo headphone/line out, stereo microphone in, integrated dual-microphone array	
Wireless support^{4, 5, 6}	Optional HP un2400 HSPA (High Speed Packet Access) Mobile Broadband Module (requires mobile network operator service); Intel 802.11 a/b/g/draft-n, Broadcom 802.11 a/b/g/draft-n or b/g wireless LAN, Bluetooth® 2.0, HP Wireless Assistant	
Communications⁹	Intel Gigabit Network Connection ⁹ (10/100/1000 NIC), 56K v.92 modem	
Expansion slots	1 ExpressCard/54 slot (also supports ExpressCard/34), Secure Digital slot	
Ports and connectors	2 USB 2.0 ports, VGA-out, stereo microphone in, stereo headphone/line out, 1394a, power connector, RJ-11/modem, RJ-45/ethernet, docking connector for HP 2700 Ultra-Slim Expansion Base	
Input device	Full-sized keyboard, enhanced dual pointing devices (touchpad and pointstick) with scroll zone, digitizer pen, Jog dial, 2 MP Webcam ¹² with Business Card Reader Software	
Manageability	Intel® Centrino® 2 with vPro technology capable, ¹¹ HP Client Manager Software, HP Client Configuration Management Agent	
Software	HP Recovery Manager (Vista only), HP Help and Support Center, HP QuickLook 2, HP Universal Print Driver, HP ProtectTools Security Manager, HP Quick Launch Buttons, HP Wireless Assistant, Microsoft® Office Ready with 60-day Office Professional 2007 Trial Edition (select models), PDF Complete SE, Intervideo WinDVD – DVD Player, Roxio Creator Business (for optional DVD+/-RW and DVD/CDRW drives), McAfee Total Protection ¹⁶ , Synaptics Touchpad Driver, Microsoft® Windows Live Messenger (select models), HP Webcam Software	
Security	Standard: HP ProtectTools, TPM Embedded Security Chip 1.2, ¹⁹ Enhanced Pre-Boot Security, HP SpareKey, HP Disk Sanitizer, Enhanced DriveLock, HP Fingerprint Sensor, Drive Encryption for HP ProtectTools, Credential Manager for HP ProtectTools, File Sanitizer for HP ProtectTools Optional: Smart Card Reader, ¹² Kensington Lock slot, HP Privacy Filter, McAfee Security Solution ¹⁶	
Dimension (h x w x d)	1.11 in (at front) x 11.42 in x 8.35 in / 28.2 mm (at front) x 290.0 mm x 212.0 mm	
Weight	Starting at: 3.74lbs / 1.70kg (weight will vary by configuration)	
Power¹⁸	6-cell (44 Whr) Lithium-Ion battery, optional HP 2700 (46 Whr) Ultra-Slim Battery, ² 65W HP Smart AC Adapter, HP Fast Charge ¹⁰	
Expansion solutions¹²	HP 2700 Ultra-Slim Expansion Base, HP Monitor Stand, HP Basic Adjustable Notebook Stand	
Warranty	Limited 3-year and 1-year warranty options available depending on country, 1-year limited warranty on primary battery	

Footnote

1. Certain Windows Vista product features require advanced or additional hardware. See www.microsoft.com/windowsvista/getready/hardwarereqs.aspx and www.microsoft.com/windowsvista/getready/capable.aspx for details. Windows Vista Upgrade Advisor can help you determine which features of Windows Vista will run on your computer. To download the tool, visit www.windowsvista.com/upgradeadvisor.
2. Dual Core is a new technology designed to improve performance of certain software products. Not all customers or software applications will necessarily benefit from use of this technology. 64-bit computing on Intel architecture requires a computer system with a processor, chipset, BIOS, operating system, device drivers and applications enabled for Intel® 64 architecture. Processors will not operate (including 32-bit operation) without an Intel 64 architecture-enabled BIOS. Performance will vary depending on your hardware and software configurations. See www.intel.com/info/em64t for more information.
3. Do not copy copyright protected materials. Intended for creation and storage of your original material and other lawful uses. Double layer discs can store more data than single layer discs. Double-layer discs burned with this drive may not be compatible with many existing single-layer DVD drives and players. LightScribe creates a monochrome image. LightScribe media required and sold separately. Note that DVD-RAM cannot read or write to 2.6 GB Single Sided/5.2 GB Double Sided – Version 1.0 media.
4. Wireless broadband use requires separately purchased service contract. Check with service provider for availability and coverage in your area. Available in select countries only. Wireless, internet, and VoIP require separately purchased service contract.
5. WiFi access point and internet service required and not included. Availability of public wireless access points limited.
6. The specifications for the 802.11n WLAN are draft specifications and are not final. If the final specifications differ from the draft specifications, it may affect the ability of the notebook to communicate with other 802.11n WLAN devices.
7. For hard drives, GB = 1 billion bytes. Actual formatted capacity is less. Up to 8 GB (for XP) and 10 GB (for Vista) of system disk is reserved for the system recovery software.
8. Shared video memory (UMA) uses part of the total system memory for video performance. System memory dedicated to video performance is not available for other use by programs.
9. The term "10/100/1000" or "Gigabit" Ethernet indicates compliance with IEEE standard 802.3ab for Gigabit Ethernet, and does not connote actual operating speed of 1 Gb/sec. For high speed transmission, connection to a Gigabit Ethernet server and network infrastructure is required.
10. HP Fast Charge technology recharges your battery up to 90% within 90 minutes when the system is off. Fast Charge does not apply to 12-cell Ultra-Capacity battery.
11. Select models only. Some functionality of Intel Centrino Pro and vPro, such as Intel Active management technology and Intel Virtualization technology, requires additional 3rd party software in order to run. Availability of future "virtual appliances" applications for Centrino Pro and vPro technology is dependant on 3rd party software providers. Compatibility with future "virtual appliances" and Microsoft Windows Vista operating system is yet to be determined.
12. Sold separately or purchased as an optional feature.
13. Windows Vista Business disk also included for future upgrade if desired. To qualify for this downgrade an end user must be a business (including governmental or educational institution) and is expected to order annually at least 25 customer systems with the same custom image.
14. HD content required to view HD images.
15. Dual Channel is only supported when the system is configured with DDR2 symmetric memory (ie: 2x256).
16. 60 day trial period. Internet access required to receive updates. First update included. Subscription required for updates thereafter. This McAfee Total Protection for Small Business software is licensed to you by McAfee under the terms of the McAfee end user license agreement which can be read at www.mcafee.com.
17. Testing was not intended to demonstrate fitness for DOD (Department of Defense) contracts requirements or for military use. Test results are not a guarantee of future performance under these test conditions.
18. Battery life will vary depending on the product model, configuration, loaded applications, features, & power management settings. The maximum capacity of the battery will decrease with time and usage.
19. TPM module disabled where use is restricted by law, for example, Russia and China.

